

Accessories



Printer – Each cycle is documented by the integrated printer (thermal / ink) which records the preset and actual parameters of the cycle: the selected sterilization or test cycle, cycle parameters, date, time, temperature, pressure, errors, etc.



SD card – Sterilization cycles' data can be collected online on a SD Card through an optional SD Card Slot. Collected data can be downloaded into a computer equipped with proprietary PC Software.



Pressure gauge – Analog pressure gauge installed on the front of the sterilizer machine to indicate chamber/jacket/steam generator pressure in addition to the LCD Display.



Reverse osmosis system (water purifier) – A Reverse Osmosis system shall be used to improve the quality of the water used to generate steam in the electric steam generator and to secure fully automatic operation. The use of mineral-free water will contribute to better performance and longer life of the autoclave's chamber.



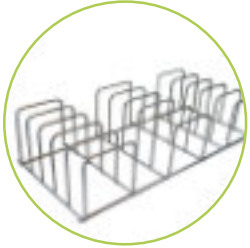
HMI PC software (Monitoring and Documentation Software) – Powerful PC Windows based software is available for monitoring, logging sterilization cycle parameters, and providing complete control and service over the autoclaves.



Tray holder and trays – Stainless steel tray holder with up to 6 trays. Stainless Steel Tray, Size (W * H * D): 200 * 18 * 390 mm



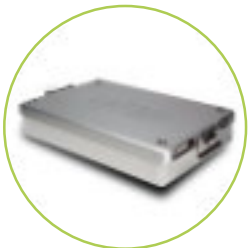
Wire Mesh Basket – Stainless Steel Wire mesh basket. Size (W * H * D): 180 * 165 * 398 mm



Pouch Rack Type 1 – Stainless Steel Pouch Rack with 3 rows for up to 15 pouches. Size (W * H * D): 155 * 78 * 330 mm



Pouch Rack Type 2 – Stainless Steel Pouch Rack with 2 rows for up to 13 pouches. Size (W * H * D): 180 * 60 * 330 mm



Dental Aluminium Containers – Aluminium dental containers are available in different sizes.



Tray Handle Glove – Heat resistant personal protective wear for the operator.

